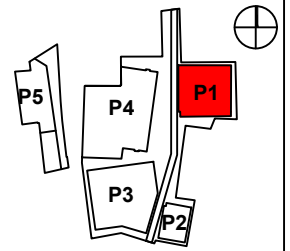
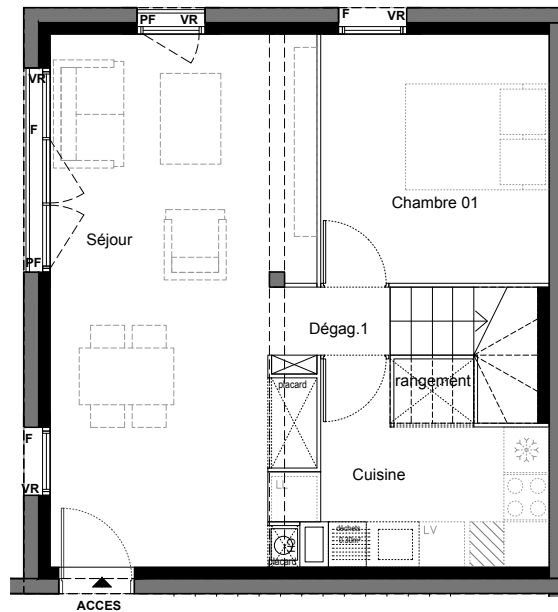
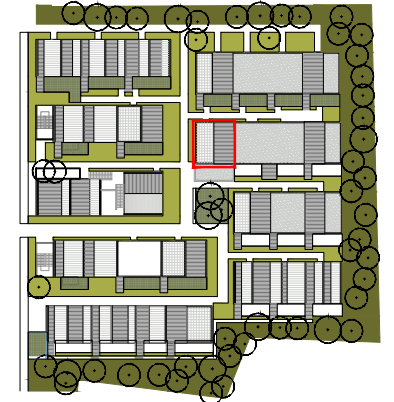


**OASIS URBAINE - ILOT
CASTORAMA**

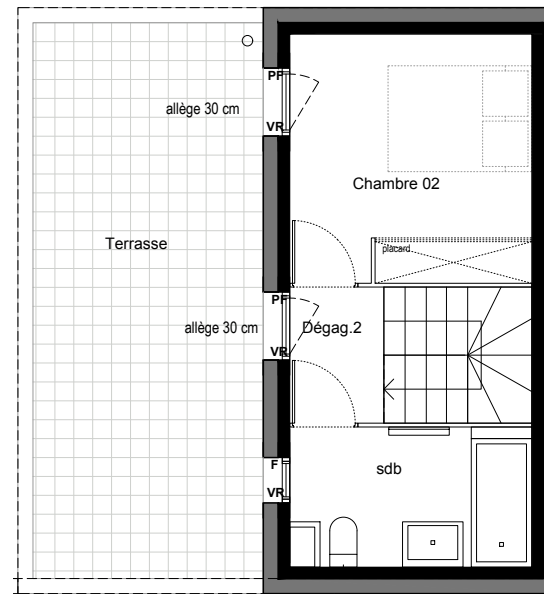
Avenue de la Somme,
33700 MERIGNAC



ILOT P1



niveau R+1



niveau R+2

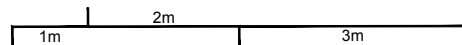


TABLEAU DE SURFACES

		G101
Niveau bas		
Séjour	23.42 m ²	
Cuisine	6.80 m ²	
Rangement sous escalier	0.95 m ²	
Dégagement 1	1.45 m ²	
Chambre 01	9.96 m ²	
Niveau haut		
Dégagement 2	2.37 m ²	
Sdb	5.22 m ²	
Chambre 02	11.47 m ²	
Total habitable	61.06 m²	
Terrasse	22.00 m ²	
Total surface extérieure	22.00 m²	

Bâtiment G

**Typologie
T3 duplex**

* surface de jardin approximative

LEGENDES			
	Limite clôture	PF	Porte-Fenêtre
	Tableau GTL	F	Fenêtre
	Chaudière	VR	Volet Roulant

09 mai 2019